

DRC

PZ24-12000008
09/08/2024

FOLIAGE EXPRESSIONS
8801 SW 192nd Trl
Cutler Bay, FL 33187



Digitally signed by James B. Euell
Date: 2024.07.29 08:59:44 -0400

ECO POMPANO TOWNHOMES

3225 NE 5TH STREET
POMPANO BEACH FLORIDA 33062

PROJECT NAME & LOCATION:

DISTRIBUTION:	DATE:

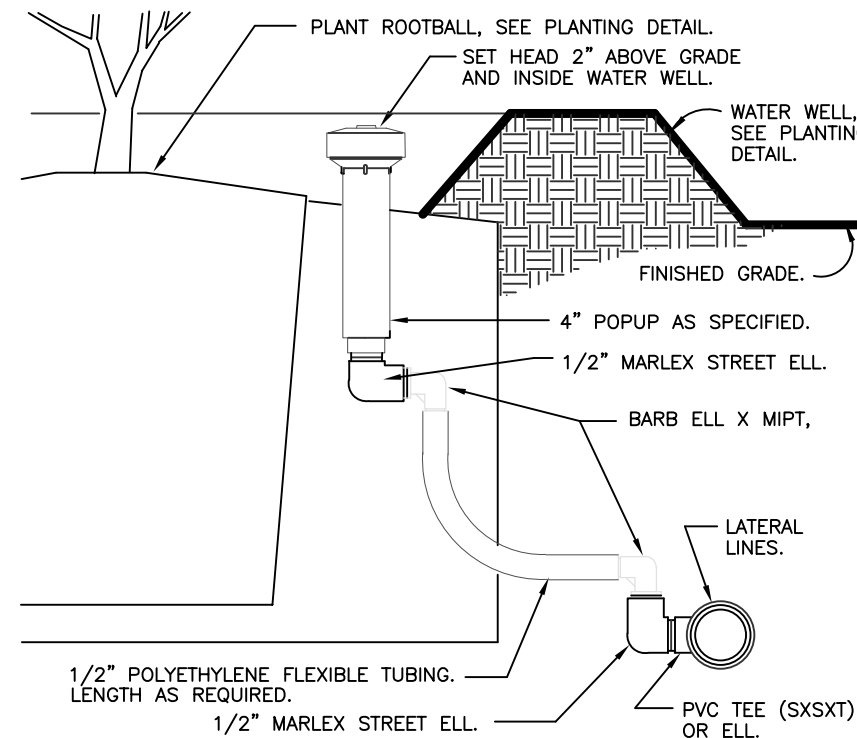
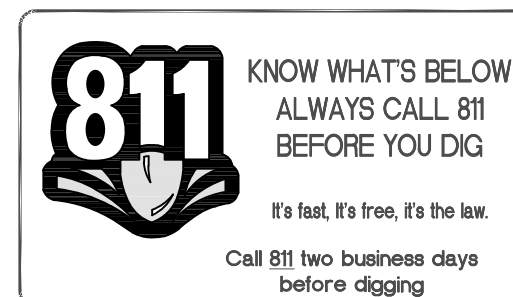
DRAWING NAME:
IRRIGATION
DETAILS

DRAWING NUMBER:

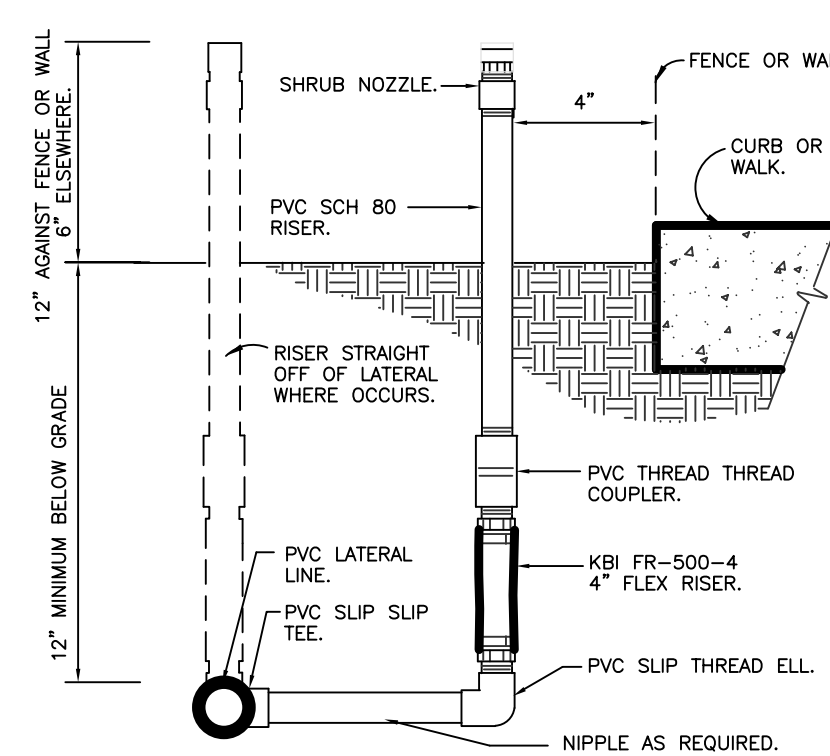
L-301

PZ24-12000008
01/15/2025

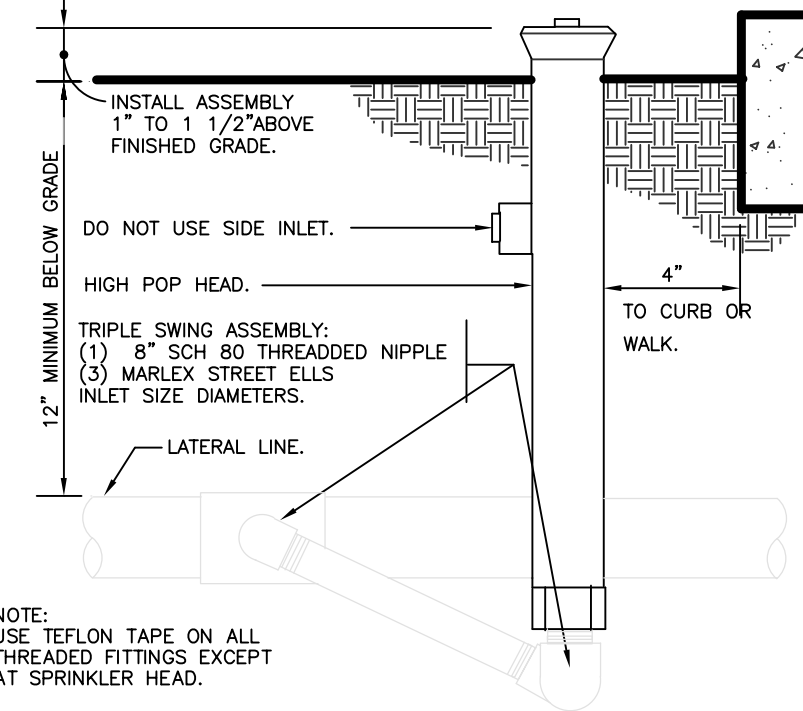
DRC



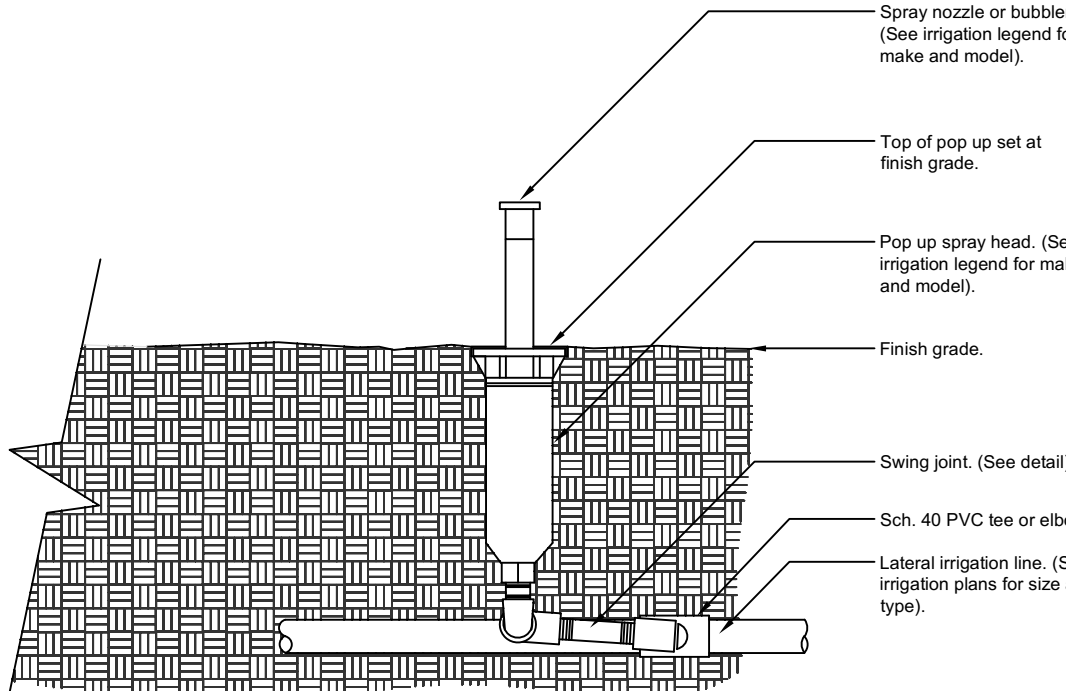
4 POPUP BUBBLER AT PLANT PIT
3\"/>



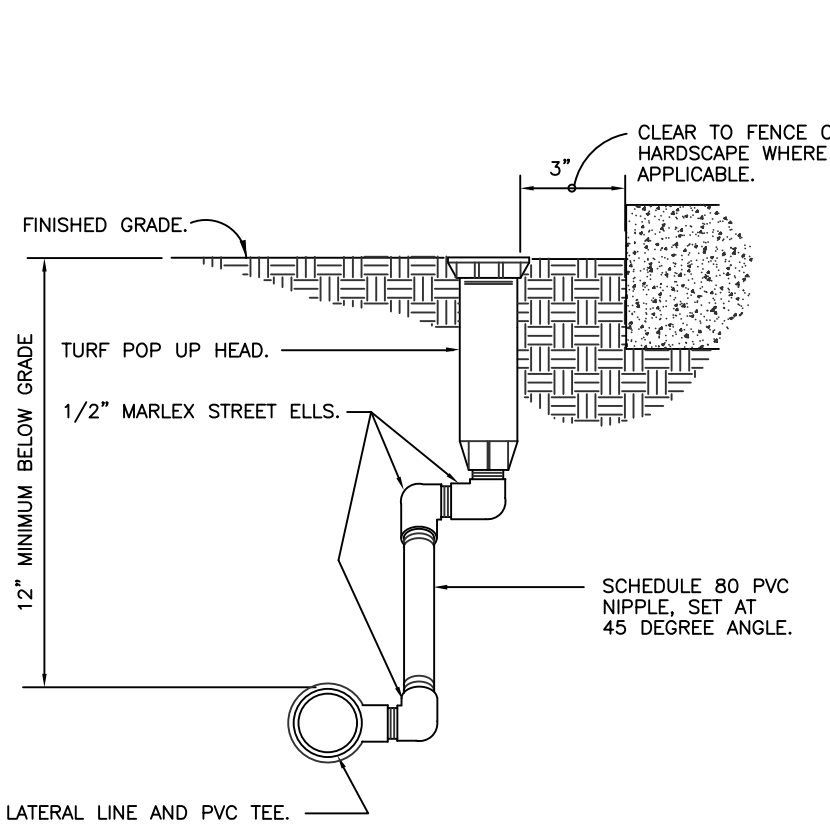
3 SHRUB SPRAY KBI FIXED RISER
3\"/>



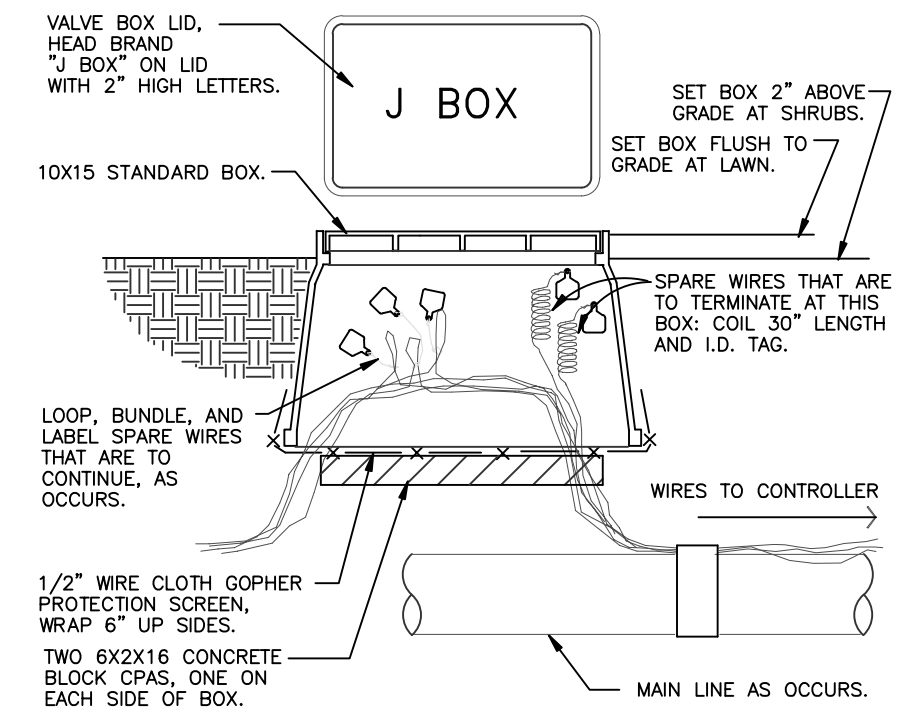
2 SHRUB SPRAY HIGHPOP MARLEX ASSEMBLY
3\"/>



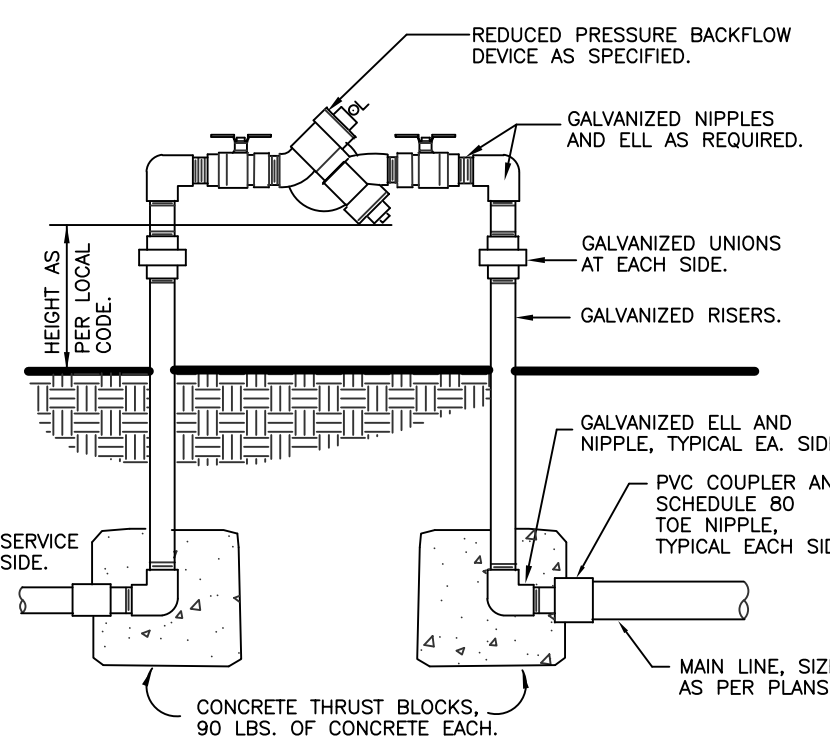
1.1 POP UP-SPRAY HEAD
1 1/2\"/>



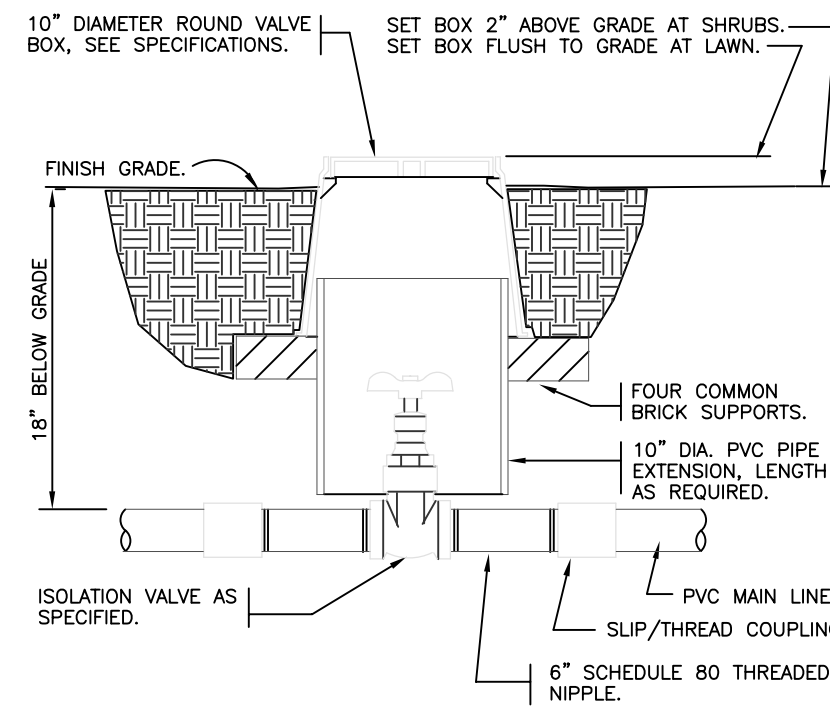
1 TURF SPRAY MARLEX ASSEMBLY
3\"/>



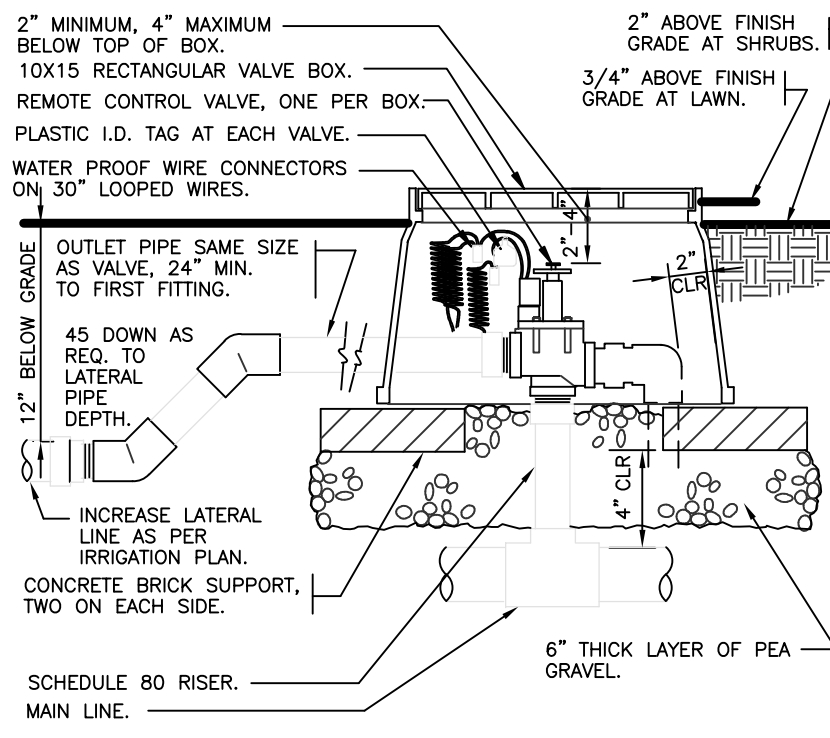
10 WIRE BUNDLE JUNCTION BOX
1 1/2\"/>



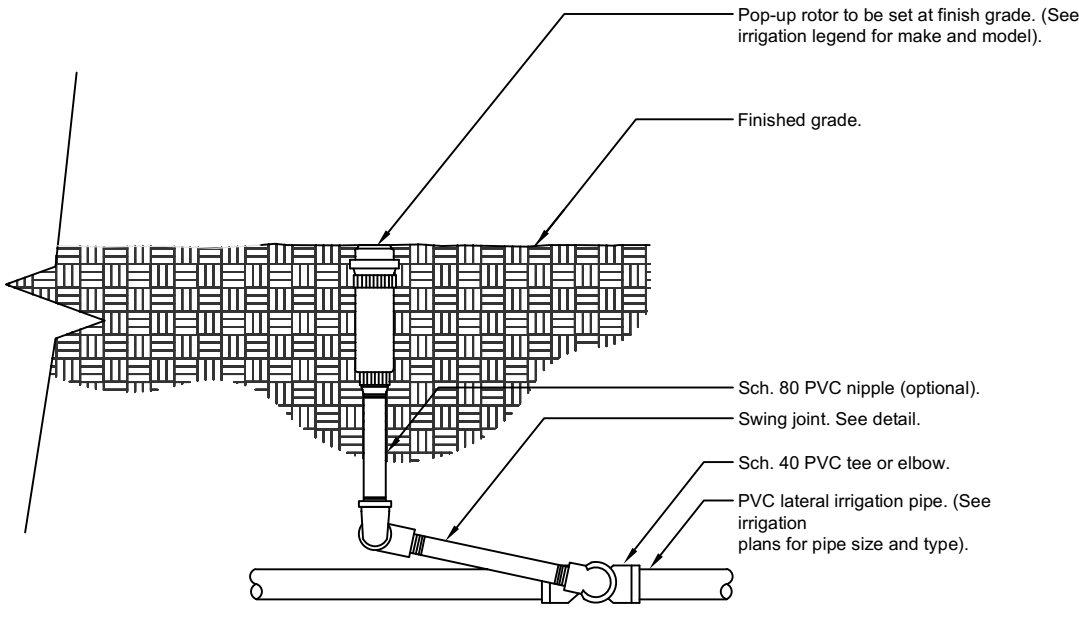
8 REDUCED PRESSURE BACKFLOW DEVICE
1\"/>



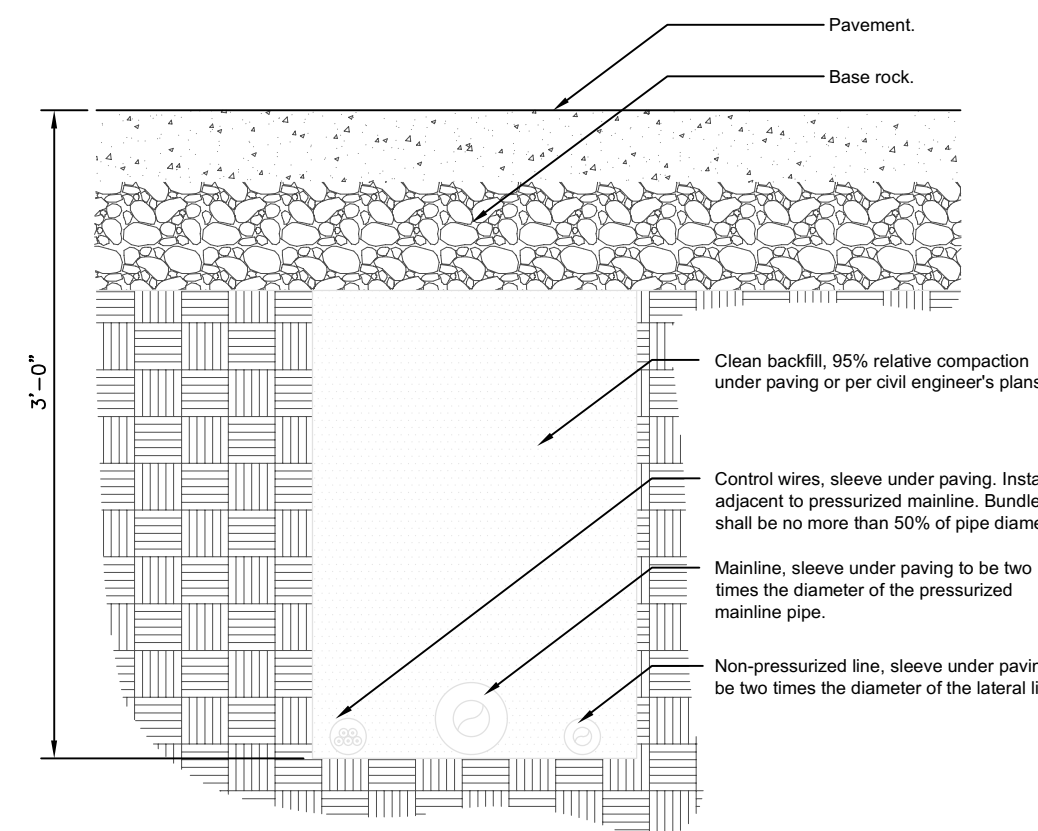
7 BRASS ISOLATION VALVE
1 1/2\"/>



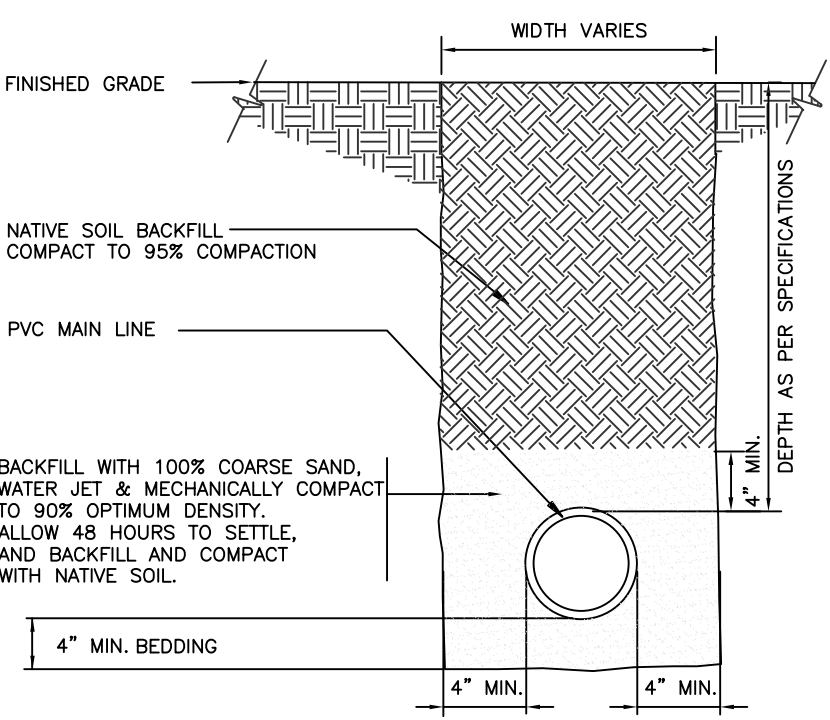
6 ELECTRIC REMOTE CONTROL VALVE
1 1/2\"/>



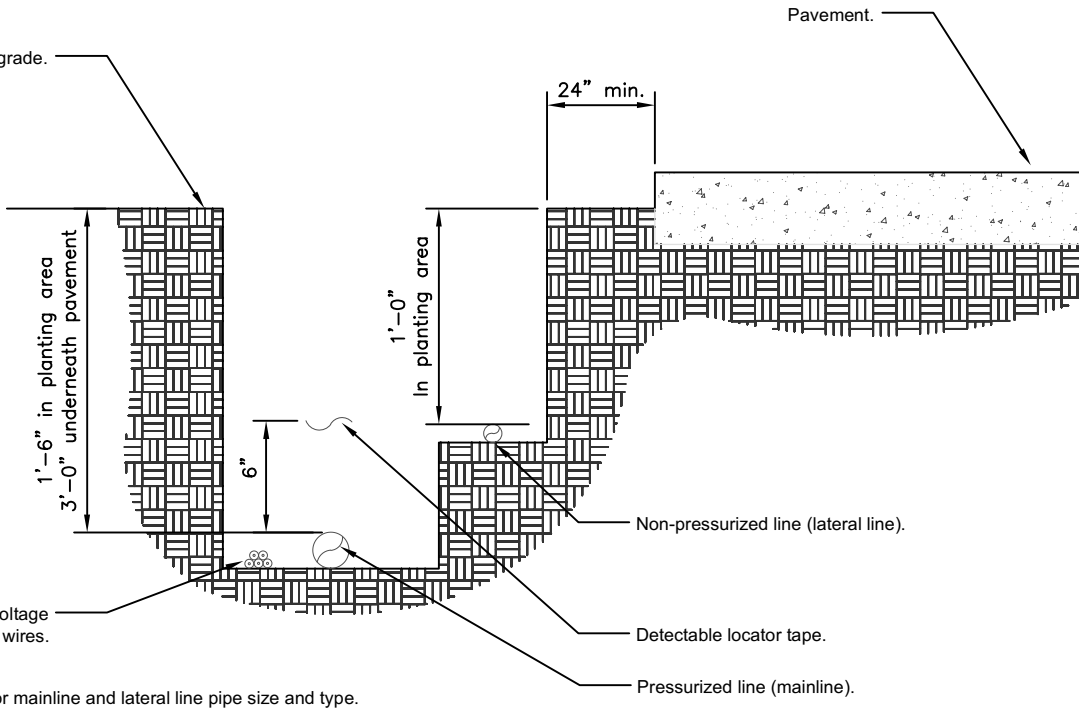
5 ROTOR SPRAYHEAD
1 1/2\"/>



13 PIPE BENEATH PAVEMENT
1 1/2\"/>



12 MAINLINE WITH SAND BEDDING
1 1/2\"/>



11 IRRIGATION TRENCHING
1 1/2\"/>

Notes:
1- All threaded connection points between Sch. 40 PVC and Sch. 80 PVC fitting shall be installed using teflon tape.
2- Contractor shall compact soil around rotor and riser prior to planting, plugging, seeding, or laying of sod.

Notes:
1- See irrigation legend for mainline size and type.
2- All sleeves shall be Sch. 40 PVC pipe.
3- All sleeves shall extend 12\"/>

UPRISK TREE FOUNDATION © 2014
OPEN SOURCE FREE TO USE
FX-IR-FX-AUXEO-13

UPRISK TREE FOUNDATION © 2014
OPEN SOURCE FREE TO USE
FX-IR-FX-AUXEO-09

UPRISK TREE FOUNDATION © 2014
OPEN SOURCE FREE TO USE
FX-IR-FX-HEAD-01

UPRISK TREE FOUNDATION © 2014
OPEN SOURCE FREE TO USE
FX-IR-FX-CONT-09

UPRISK TREE FOUNDATION © 2014
OPEN SOURCE FREE TO USE
FX-IR-FX-HEAD-01